

**Only** 6 W  
23 dB(A)



Eco 100



Eco  
Platinum

#### ■ Use

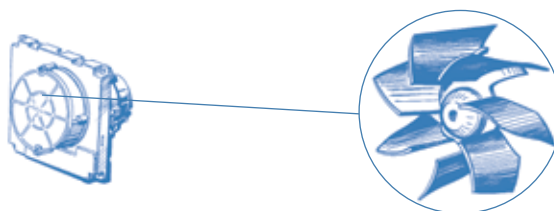
- ☐ Extract fans

#### ■ Application

- ☐ Residential premises
- ☐ Flats, cottages
- ☐ Offices
- ☐ Utility spaces
- ☐ Trade premises
- ☐ Restaurants
- ☐ Health care facilities
- ☐ Child care facilities

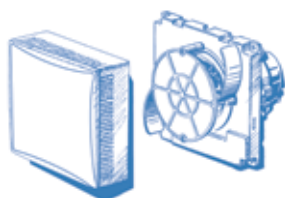
#### ■ Features

- ☐ Low energy consumption of the motor (6 W) designed by BLAUBERG engineers
- ☐ Noiseless impeller blades resemble the shape of the submarine propeller, thereby ensuring high performance and minimum noise level (23 dB(A))

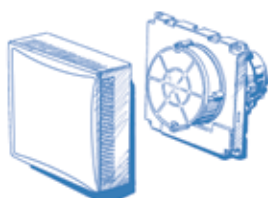


- ☐ Unique patented design of the concealed automatic shutters to prevent back air flow during the fan shutoff
- ☐ 10 year warranty for non-stop operation

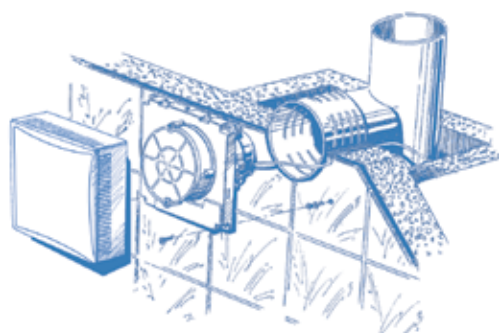
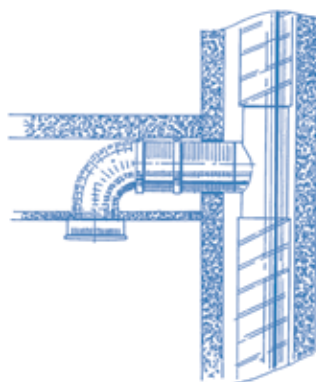
Automatic shutters



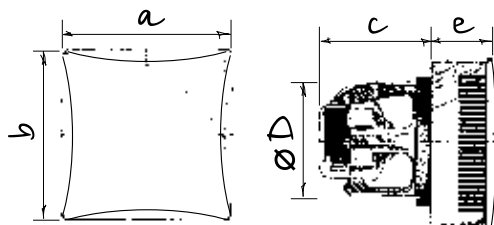
«open» position



«closed» position

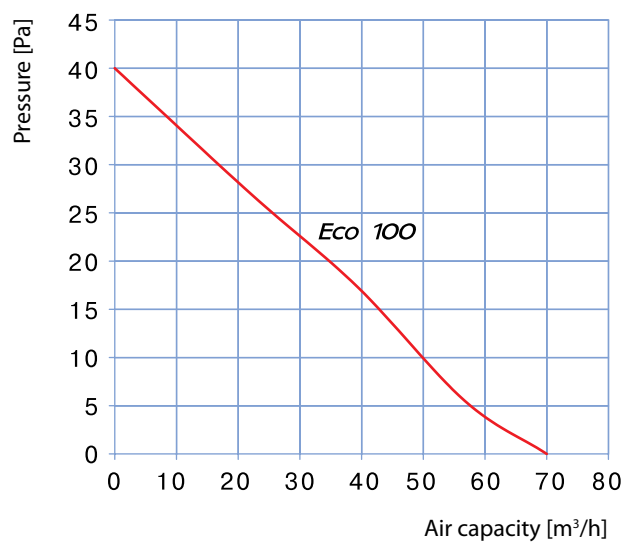


## Overall and mounting dimensions



Model	Dimensions [mm]				
	a	b	c	D	e
Eco 100	160	160	85	96	55

## Technical data



Parameters	Eco 100
Voltage [V]	220-240
Power [W]	6
Air capacity [m³/h]	70
Sound pressure level at 3 m [dB(A)]	23



## Packing

