

Terminal, Help & User guide

System Requirements	3
Physical connection to the device	4
Driver Installation	5
Device Installation	11
Driver Uninstallation	12
Connect to the device	13
Disconnection from the device	14
Update firmware	15
Device Setup	17

System Requirements

- Windows XP (Service Pack 3 or later)
- Windows Vista (Service Pack 1 or later)
- Windows Vista (Service Pack 1 or later)
- Windows Vista (Service Pack 1 or later)
- Windows 7
- Administrative privileges on your computer (please consult your system administrator for details)

Physical connection to the device

Use usb cable (USB type A - USB type B) to connect the device to a PC (for device with USB type B input port)



USB type B input port



USB type A - USB type B cable

Use usb cable (USB type A - USB type A) to connect the device to a PC (for device with USB type A input port)



USB type A input port



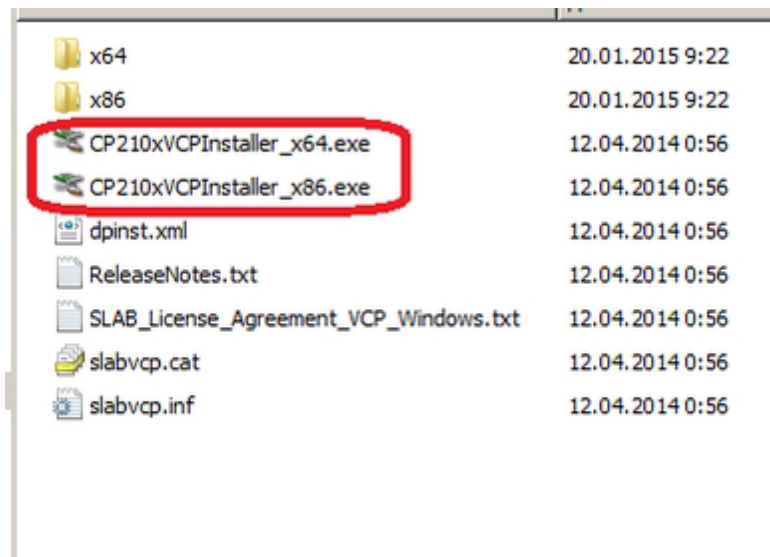
USB type A - USB type A cable

Driver Installation

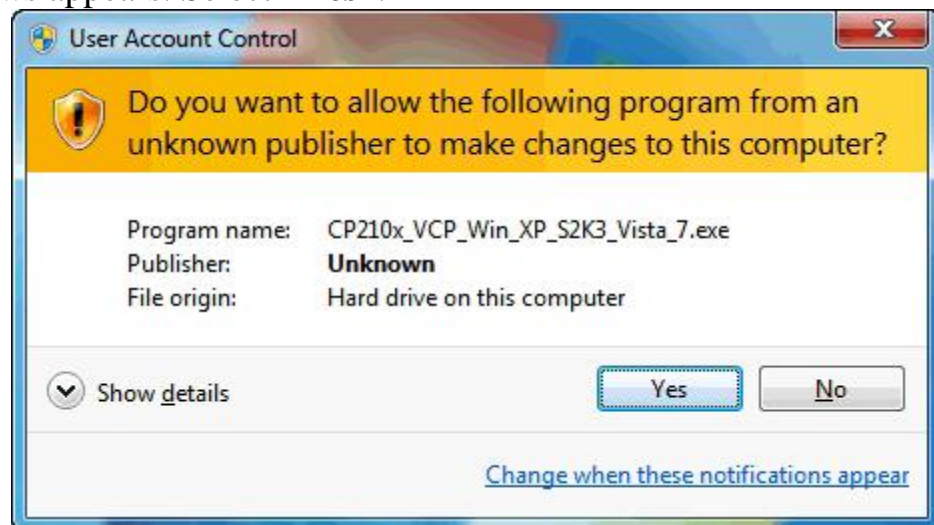
Latest drivers can be downloaded from: [CP2102 driver](#)

Note: the screenshots below were obtained in Windows 7; certain system prompts may differ in other versions of Windows, but the overall procedure will be the same.

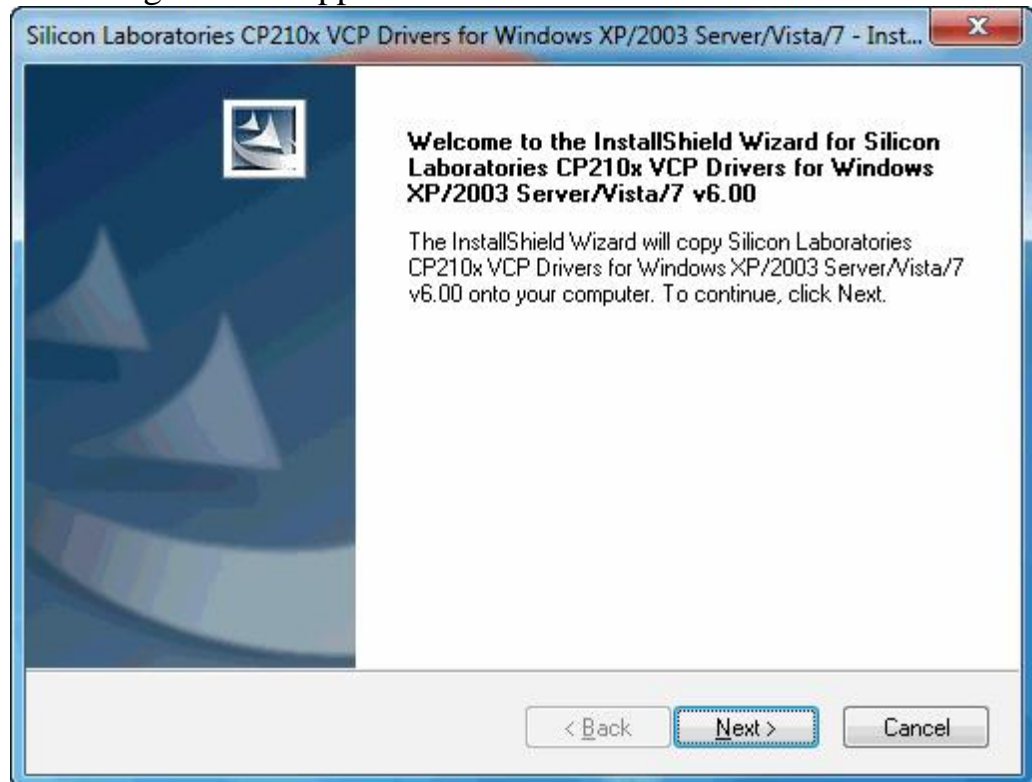
1. Unpack **CP210x_VCP_Windows.zip**, and run
CP210xVCPIInstaller_x64.exe (for 64-bit system) or
CP210xVCPIInstaller_x86.exe (for 32-bit system):



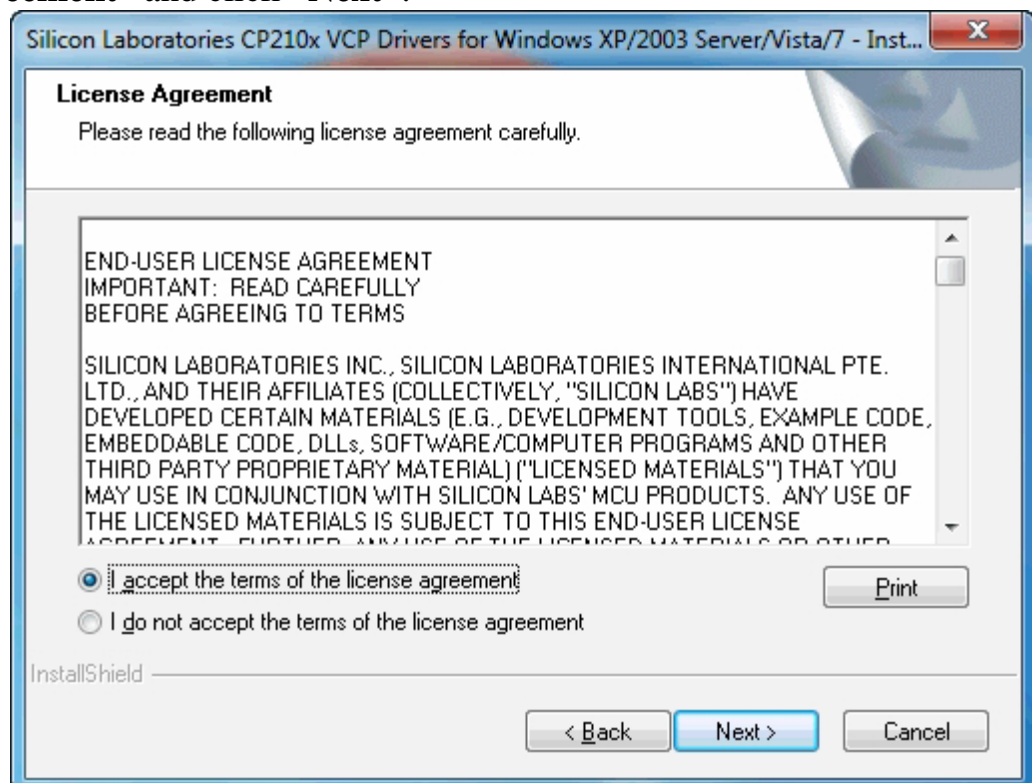
2. Double click the selected file. If you are using Windows7 the following windows appears. Select “Yes”.



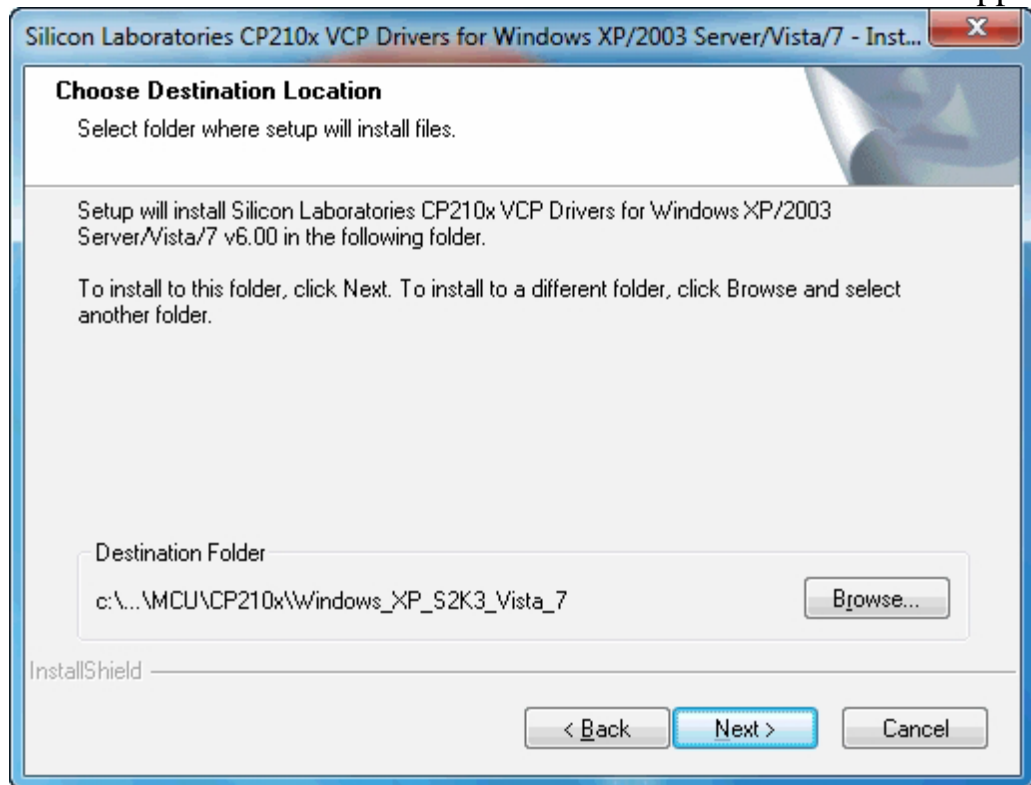
3. The following window appears after a few moments. Select “Next”.



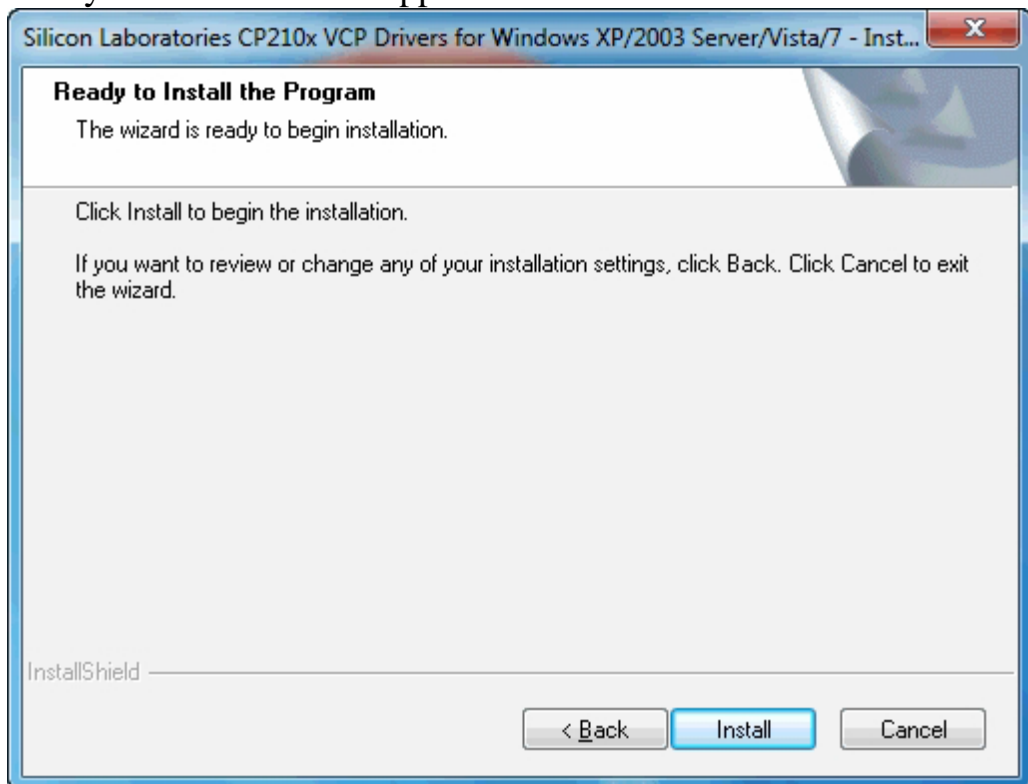
4. Licence agreement window appears. Select “I accept the terms of licence agreement” and click “Next”.



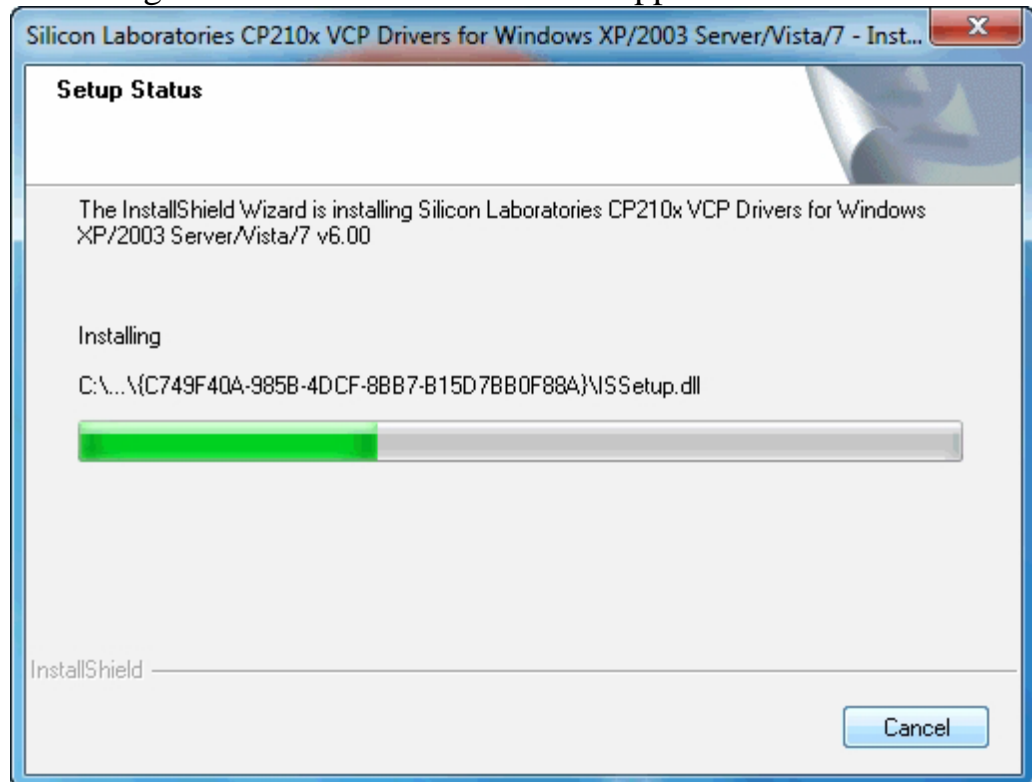
5. Choose the destination folder using **“Browse...”** if you need to change the location of the installation in the Destination Location window that appears.



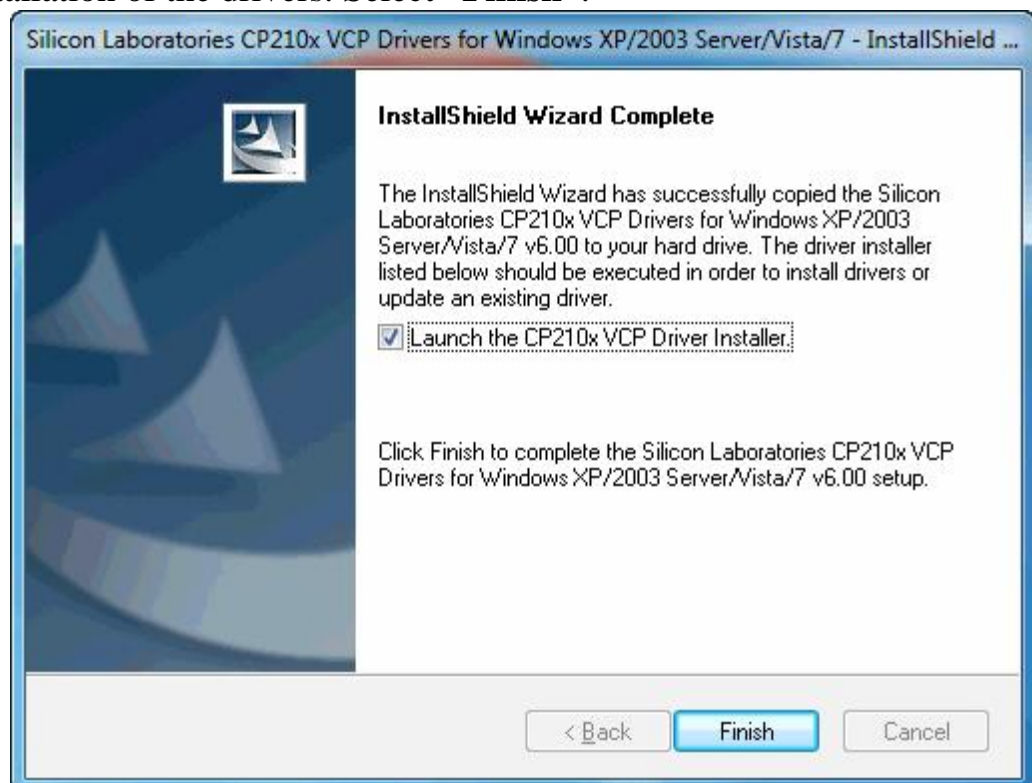
6. A Ready to Install window appears next. Select **“Install”**.



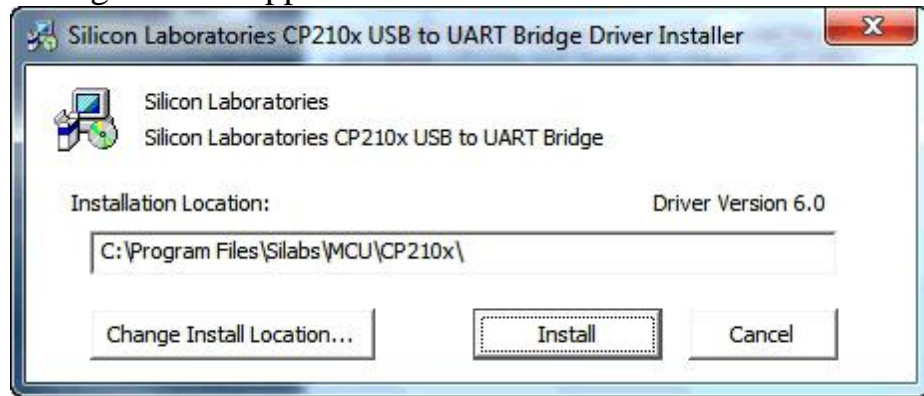
7. The following Status window of installation appears. Wait until it finishes.



8. The Installation Shield Complete window appears indicating successful installation of the drivers. Select "**Finish**".



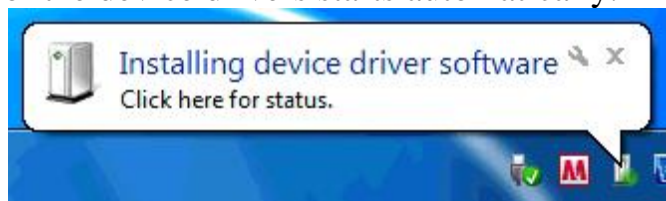
9. The following window appears for driver installation. Select **“Install”**.



10.A Installation Complete window appears later.



11.Connect the device the following message is displayed if using Windows 7.
The installation of the device drivers starts automatically.

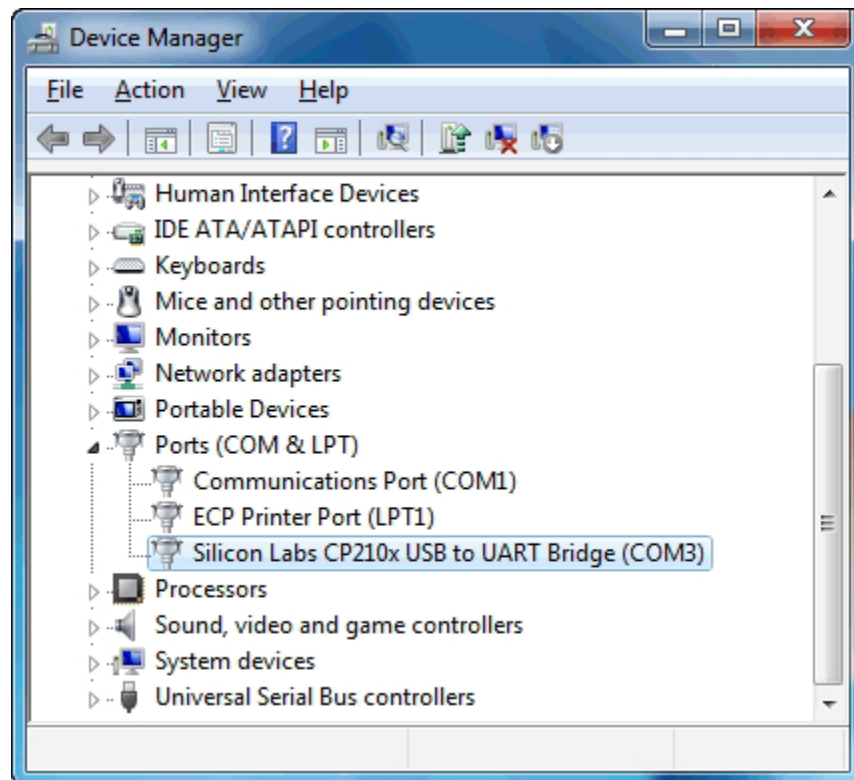


12.Confirming the COM port number.

Open the Device Manager and confirm the COM port number listed under the PORTS (COM & LPT).

To open Device Manager

1. Right-click [My Computer], then click [Manage].
2. Click [Device Manager], in the left side of the [Computer Management] window.
3. [Device Manager] will be displayed in the right side of the window.

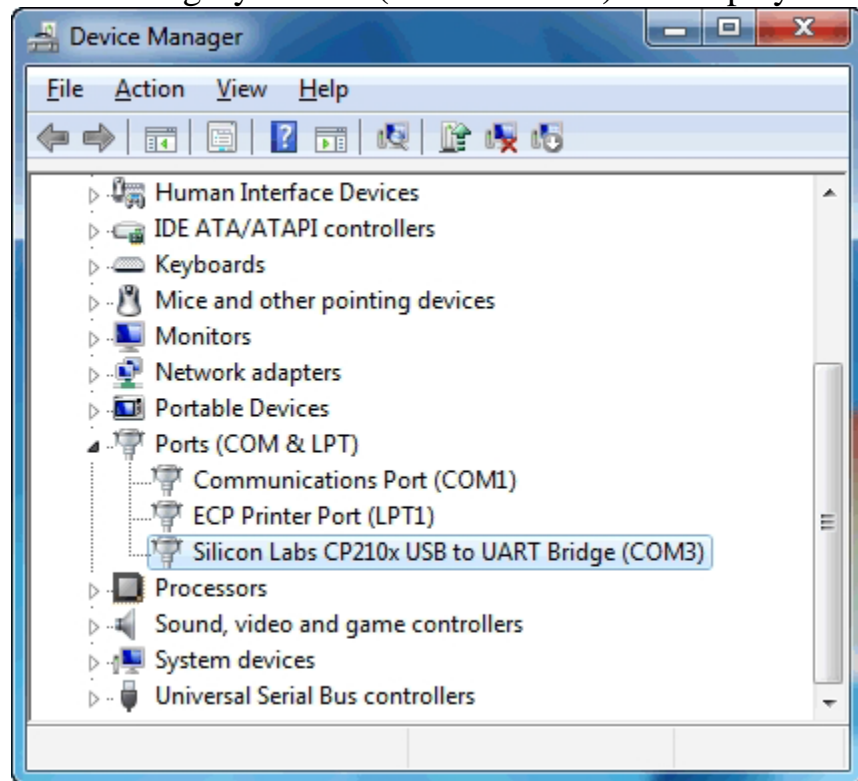


13. The COM port number assigned is different for different workstations. In this example Silicon Labs CP210x USB to UART Bridge (COM3) is listed. This means that COM3 is assigned for the connection with the transceiver. Select this port number in the configurations for communication in the software you are using.

Warning! Sometimes the system requires USB 2.0 Serial Port Driver. You can download them at USB2.0Ser for your operating system.

Device Installation

1. First complete the USB Driver installation procedure above.
2. Disconnect the device from your PC, if applicable.
3. Connect the instrument to your PC and turn the power on.
4. Wait for any automatic system installation tasks to complete.
5. Open Device Manager (right-click [My] Computer > Manage > Device Manager).
6. Double-click the category **"Ports (COM & LPT)"** to display:



7. Locate **"Silicon Labs CP210x USB to UART Bridge"** or a similarly named device to verify successful installation.

This completes instrument installation.

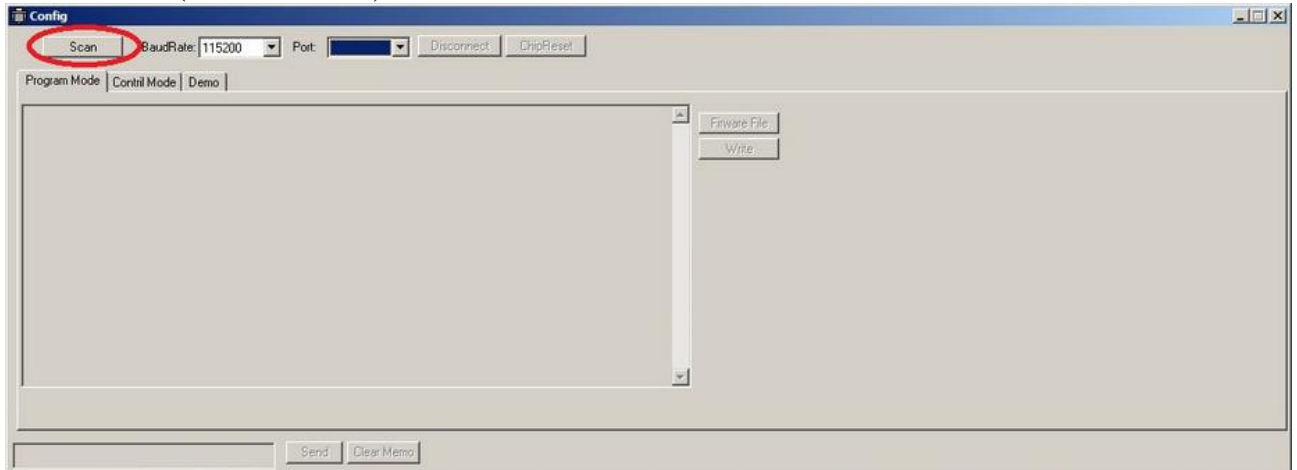
Driver Uninstallation

To uninstall any previously installed drivers, right-click on the device in Device Manager and click Uninstall. You may need to do this not only for the COM Port, but also a USB Composite Device.

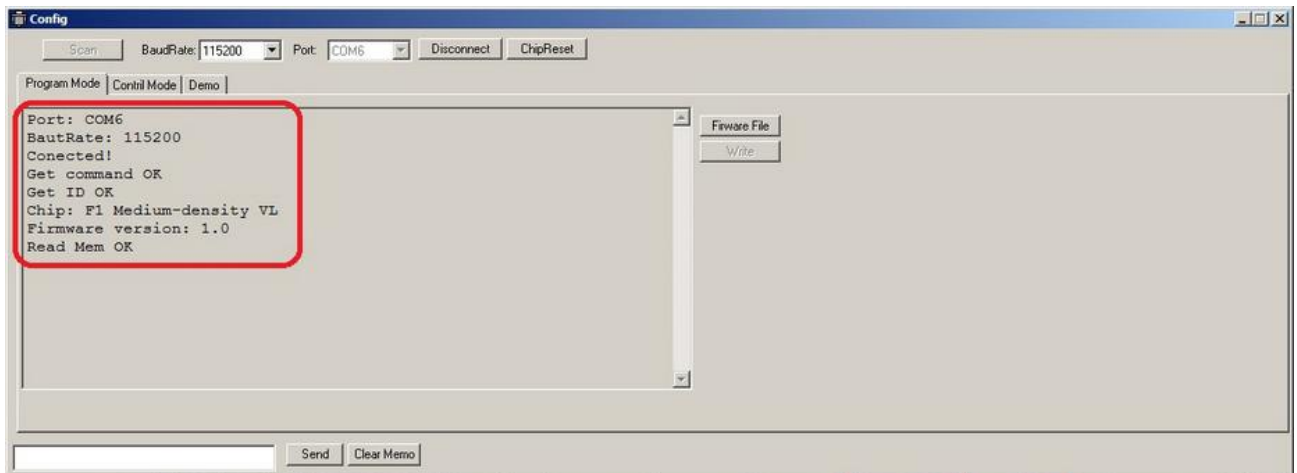
1. Right-click on the CP210x COM device in Device Manager and click Uninstall (check "Delete the software driver for this device" when prompted).
2. If present, you will also need to do this for a "Cygnal USB Composite Device" or "CP210x USB Composite Device" under the Universal Serial Bus Controllers category as shown.
3. To confirm that the USB driver is fully uninstalled, disconnect and reconnect the device to your computer and make sure that the CP210x device is now listed under.
4. If at this point a COM port is still assigned, you may also need to uninstall the driver from Control Panel > Programs and Features and repeat the procedure above.
5. Rebooting your computer immediately after uninstalling drivers may also help, especially in Windows XP and earlier.

Connect to the device

1. Run (double-click) the file "Terminal.exe"



2. Click Scan to find connected device

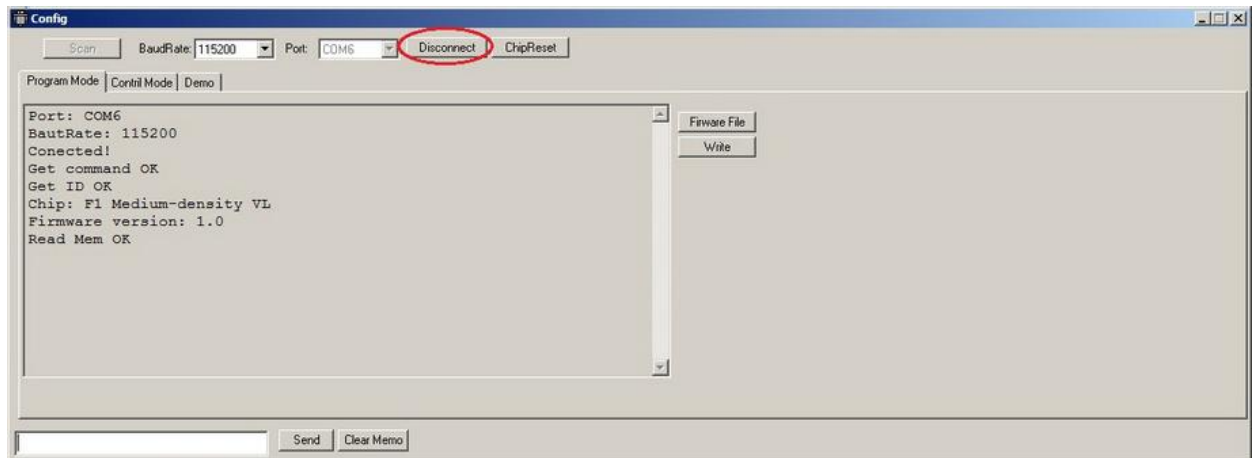


3. The program will find a connected device

WARNING: Remove the USB cable only after disconnect procedure!!

Disconnection from the device

1. click Disconnect to Disconnection from the device

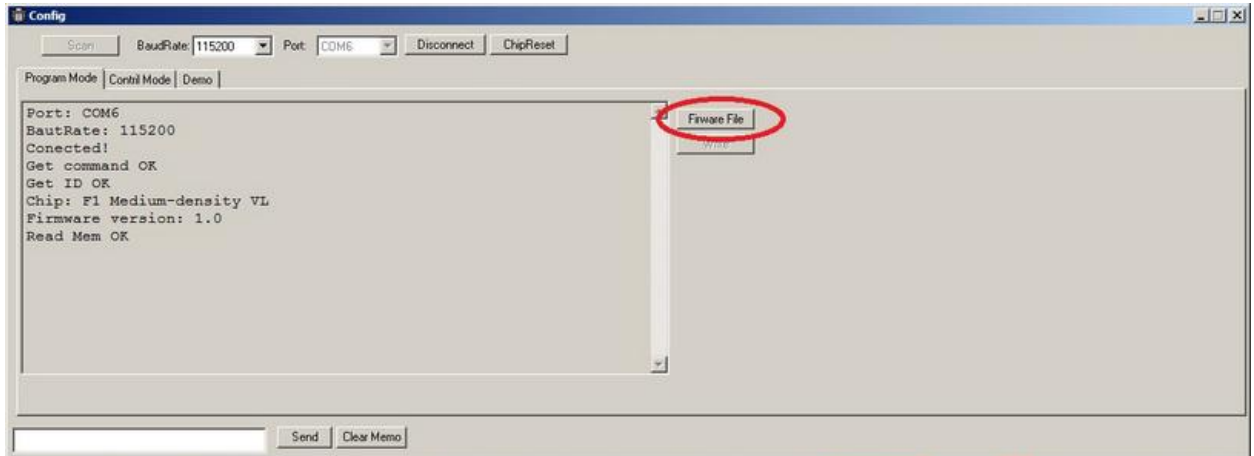


WARNING: Remove the USB cable only after disconnect procedure !!

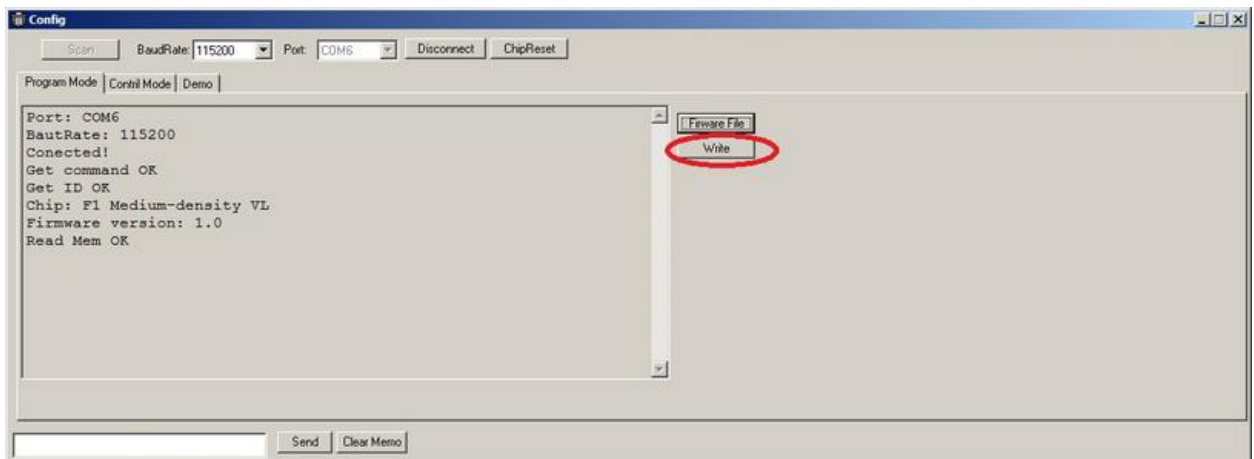
Update firmware

Warning! Before the update, follow the procedure to [Connect to the device](#)

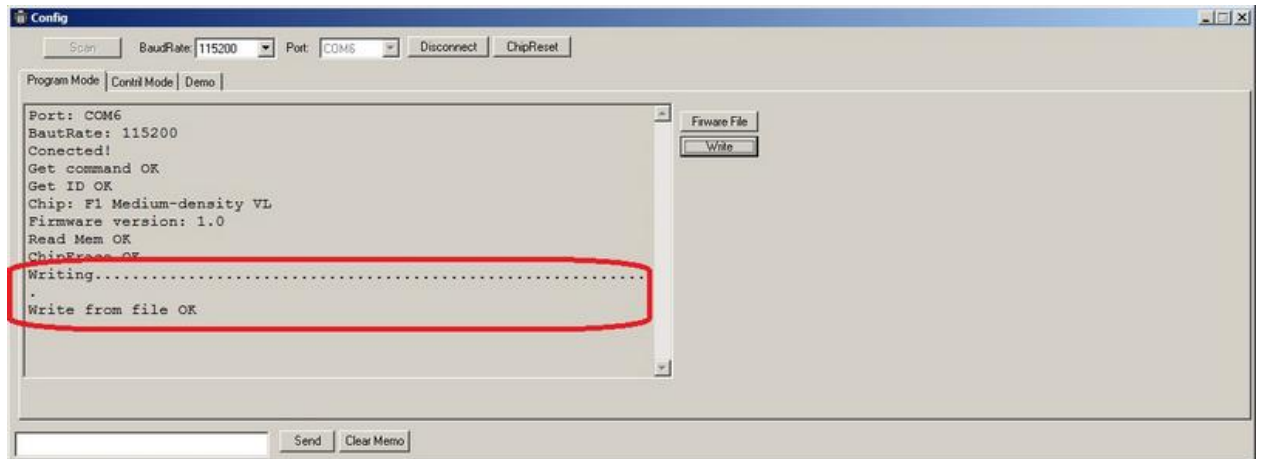
Remove the USB cable only after disconnect procedure !!



1. Click the firmware file and select the file



2. Click the Write to update firmware



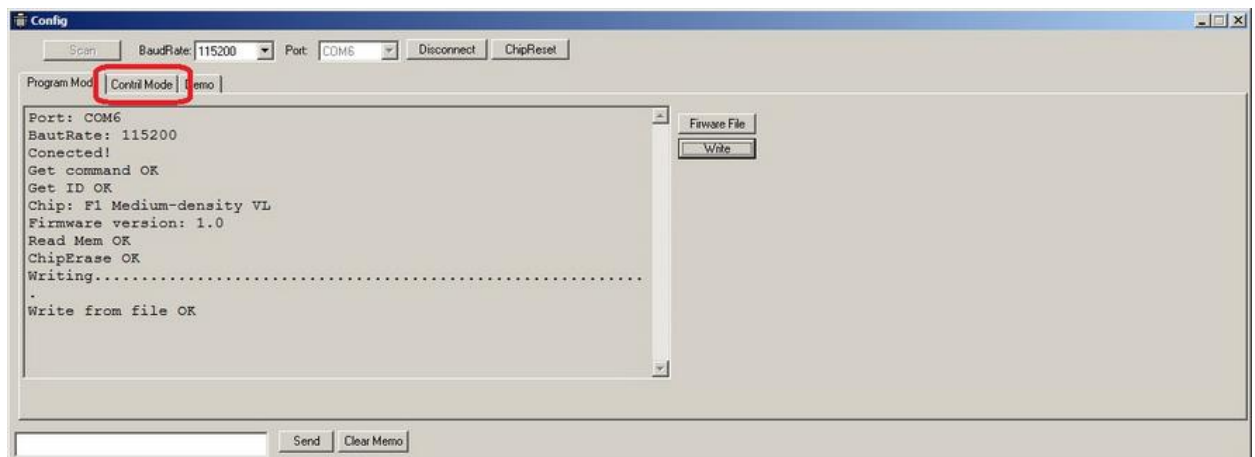
3. When the update is finished

Device Setup

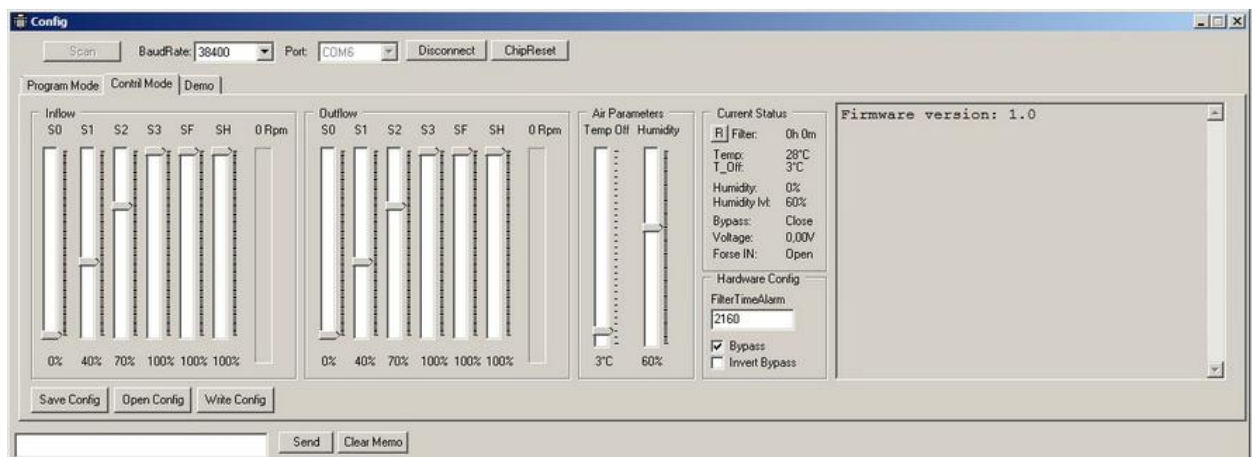
Warning! Before the switch to Control Mode, follow the procedure to [Connect to the device](#)

Remove the USB cable only after disconnect procedure !!

1. Click the Control Mode



Settings



Inflow parameters

1. S0 – speed standby, default 0%
2. S1 – first speed
3. S2 – second speed
4. S3 – third speed
5. SF – speed when an external sensor Force IN is closed
6. SH – speed when humidity sensor is triggered
7. Rpm – real time current turbine speed


Outflow parameters

- 8. S0 – speed standby, default 0%
- 9. S1 – first speed
- 10.S2 – second speed
- 11.S3 – third speed
- 12.SF – speed when an external sensor Forse IN is closed
- 13.SH –speed when humidity sensor is triggered
- 14.Rpm – real time current turbine speed

Air Parameters

- 15. Temp Off – exhaust air temperature at which the supply fan is turned off to protect the recuperator
- 16.Humidity – humidity level at which the fans are switched to speed SH

Current Status

- 17.Filter – current operating time air filter
- 18. – reset operating time air filter
- 19.Temp – current exhaust air temperature
- 20.T_Off – current air temperature at which the supply fan is turned off to protectthe recuperator
- 21.Humidity – current humidity level
- 22.Humidity lvl – current humidity level at which the fans are switched to speed SH
- 23.Bypass – current bypass state (Close, Open, None)
- 24.Voltage – current input voltage, 0-10V
- 25.Forse IN – current input voltage state (Close, Open)

Hardware config

- 26.Filter Time Alarm – limit the operating time of the air filter
- 27.Bypass – enable/disable bypass
- 28.Invert Bypass – inverts the position of the bypass on the set from the control panel

Write Config – save settings to device memory

Open Config – open settings from file

Save Config – save settings to the file